

Ken Johnson

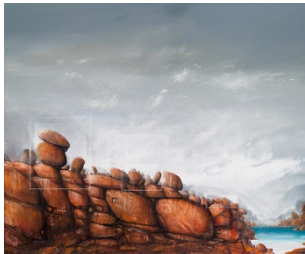
Bay of Fires

28 August – 22 September 2019

"...My work is an exploration of a deep and lifelong fascination with elements and relationships between the balance of forms and the transference of light and the mood generated by the everchanging aspects of elements within nature, metaphorically expressed as a "stage", using nature as performers.

What draws me to this unique and sumptuous region of the Bay of Fires is how a symbiosis of natural elements interact, creating moods and characters... each individual performance enhancing the éclat of nature at play."

- Ken Johnson



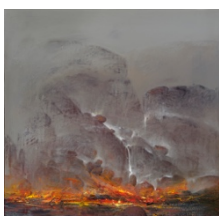
Act of Balance
2019
acrylic on linen
153 x 183 cm

Nature has a peculiar way of surprising the eye. In this scene, there are many performers acting out a variety of individual balancing roles. The stepping foundations of the monumental slab of lichened granite boulders, metaphorically serve as a "stage" for the performance. The azure waters of the bay act symbiotically in contrast, both demanding equal attention for their performing roles.



The Gardens
2019
acrylic on linen
183 x 153 cm

Respected artist John Olsen once wrote about my fascination and love of sea and estuary; "Ken Johnson has a delightful talent for acute perception of mood in landscape, his keen sensibility can embrace that exquisite quietness of sea and estuary, a theme largely untouched in Australian art." For me these locations possess a feeling of nature resting, *The Gardens* in the Bay of Fires, is such a place.



Elements
2018
acrylic on linen
100 x 100 cm

Elements of fire and water are at play in the sensitive ecological area known as the *Bay of Fires* in Tasmania an atmosphere and mood are created when the elements are competing for visual attention and are none less than spectacular when viewed from the water.

Environmental aspects impact not only on the senses but the importance of the role each element plays.



Dry Stones

2018

acrylic on linen

100 x 100 cm

Natural stacking of the lichen covered granite boulders in the Bay of Fires possess a grand performance of beauty, mystery and presence. The inspiration to paint this subject comes from being intrigued by what could be perceived as man-made constructions. The diorama metaphorically and subliminally placed inside the creviced boulder stacks suggest the balance and fragility of nature with the ecosystem.



Circumference

2019

acrylic on linen

106 x 106.5 cm

The perimeter of an arc, ellipse and circle is called the circumference. The circular bay is best appreciated from a distance or elevation, or both my fascination is with anything circular, especially when it can be discovered in its natural form.



Relic Focal

2019

acrylic on linen

101.5 x 76 cm

Aspects of light, time, forms are omnipresent when exploring the natural environment. *Relic Focal* pays homage to the performances of actors on a natural stage. Their individual roles are in complete synchronicity and complete environmental harmony. *The Bay of Fires*; region hosts an exquisite visual experience and unique balance of the elements.



Corridor

2019

acrylic on linen

101.5 x 76cm

Walking among the massive granite boulders in the Bay of Fires region of Tasmania, I encountered many natural rock formations. Metaphorically, they present an elemental “passage of time“, a “corridor “ that sits centre stage between lagoon and sea.



Backstage

2019

acrylic on linen

77 x 82 cm

Viewing the Bay of Fires from a shoreline perspective is spectacular, discovering trapped flotsam and jetsam behind the compressed boulders is equally fascinating. Appearing to create the feeling or appearance of boulders sitting in a large bird nest.



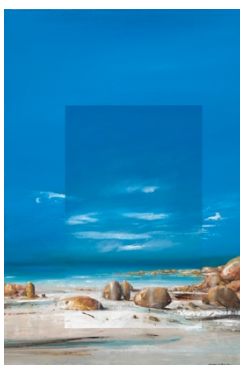
Fire Wall

2019

acrylic on linen

60.5 x 101 cm

Appearing like a red firewall, lichen covered boulders dominate and protect a fragile and rugged coastal Bay of Fires from bombardment of wind and waves.



Stage

2018

acrylic on linen

76.5 x 50 cm

Like performing actors, the disbursement of boulders take position on a sand stage. Millions of environmental dramas, the light “ insets “ are representative of changing scenes on stage.



Sanctuary
2019
acrylic on canvas
102 x 102 cm

All the elements of a heritage area are present in one scene, the lichen covered boulders, white sand, bays, estuaries and the formation of an island caused by shifting sand cays and shoals. The perfect balance of nature at play in the Bay of Fires.



Summit
2019
acrylic on linen
51 x 102 cm

I have always been fascinated with rock chasms. The element of surprise that exists when traversing their grandiose walls. The surprise presence of flora and fauna, finding security, a nest built high on a ledge, watching the everchanging dramas playing out below.



Sea and Estuary (triptych)
2019
acrylic on canvas
51 x 153 cm

The ubiquitous large egg-shaped stones in contrast to the tranquility of sea and estuary, imagining they are performers on a natural stage of white sand. They remind us of the important role that nature plays in keeping a shared harmonious balance in nature.



First Snow
2018
acrylic on canvas
51 x 76 cm

In contrast to dedicating my attentions entirely to the coastal areas of Bay of Fires, I include the path away from the coast, westward, encountering first deposits of snow in more mountainous regions. The visual relationships between snow and white sandy beaches resonated after leaving the area of the conservation park.



Two Fires
2018
acrylic on canvas
51 x 51cm

The campfire and the bushfire, two opposing realities of the delicate balance between natural events and human interactions.



Inlet
2018
acrylic on canvas
46 x 46 cm

Standing like sentinels on a fragile sand isthmus, the surreal aspects of this delicate natural spectacle are conditional of interchanging tidal ebbs and flows.



Misting Binalong
2018
acrylic on paper
57.5 x 76.5 cm

Unique mystical moods appear at often melancholic times of the day. The floral "mala" symbolising those moments of nature's special visual plays, a tribute to "curtain fall".



Balance of Nature
Mixed Media
68 30 x 47cm

Metaphorically the "egg" suggests the foundation of life, combined with components of nature, the rock, fire and flora, stress the need for balance of nature, one relying on the other for harmony and coexistence.

- Ken Johnson, August 2019